



Short Activity
Ages 6–8
15-20 minutes

Neighbourhood Mapping

Description

Participants will plot nature and elements onto a neighbourhood map.

A basic urban map has also been provided with less elements, for a wider range of audiences.

Note: The maps are only examples and do not reflect all the types of neighbourhoods that exist

Number of participants

For any number of participants

Space considerations

An indoor space where participants can be seated at tables to do an activity

Competencies

- Eye-hand coordination
- Organization and planning
- Spatial relationships

Materials

- Neighbourhood mapping handout
- Pencil crayons, markers or crayons
- Easy-grip scissors
- Liquid glue, glue sticks, Scotch tape or packing tape

Preparation

- Print out handouts for participants
- Prepare the room for a program that uses glue or paint

Implementation

Using templates

1. View urban or rural map and map elements
2. Cut out map elements (buildings, houses, nature elements, benches)
3. Place/plot objects on map before gluing them down

Creating map from scratch

1. Consider what type of neighbourhood you want to draw—urban or rural
2. Draw land, streets/roads and any water or mountain features
3. Draw buildings/houses and any nature elements

Accessibility considerations

- Variety of maps to choose from
- Print on cardstock if possible
- All items have a square border for easy cutting
- Provide easy-grip scissors, large craft sticks with liquid glue or large glue sticks if cutting out map elements
- If picking up from the table is difficult, participants can slide cut-outs to the edge of the table to pick up or prop cut-outs up against something once cut
- To extend this activity, consider using tactile elements for the map: found items like twigs and leaves, as well as other supplies like beads and pompoms, can offer texture and variation

Book suggestions

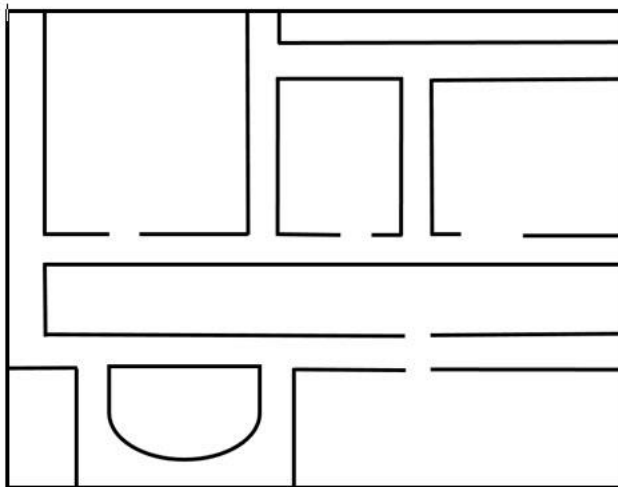
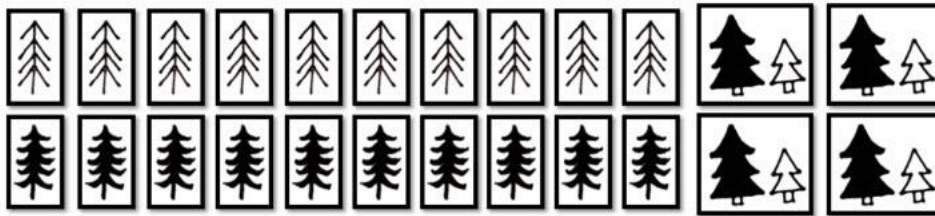
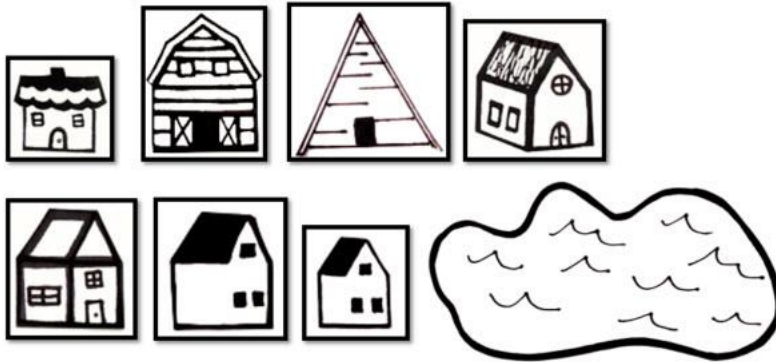
- *I'm From* by Gary R. Gray Jr. and Oge Mora
- *City of Neighbors* by Andrea Curtis and Katy Dockrill
- *Where We Live: Mapping Neighborhoods of Kids Around the Globe* by Margriet Ruurs and Wenjia Tang

Download links

- [Urban Neighbourhood Template + Elements + Example](#)
- [Rural Neighbourhood Template + Elements + Example](#)
- [Basic Urban Map Template + Elements + Example](#)

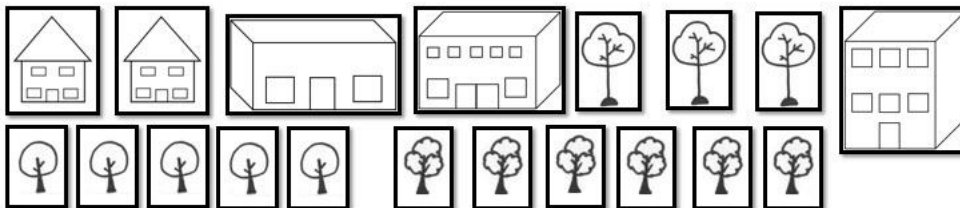


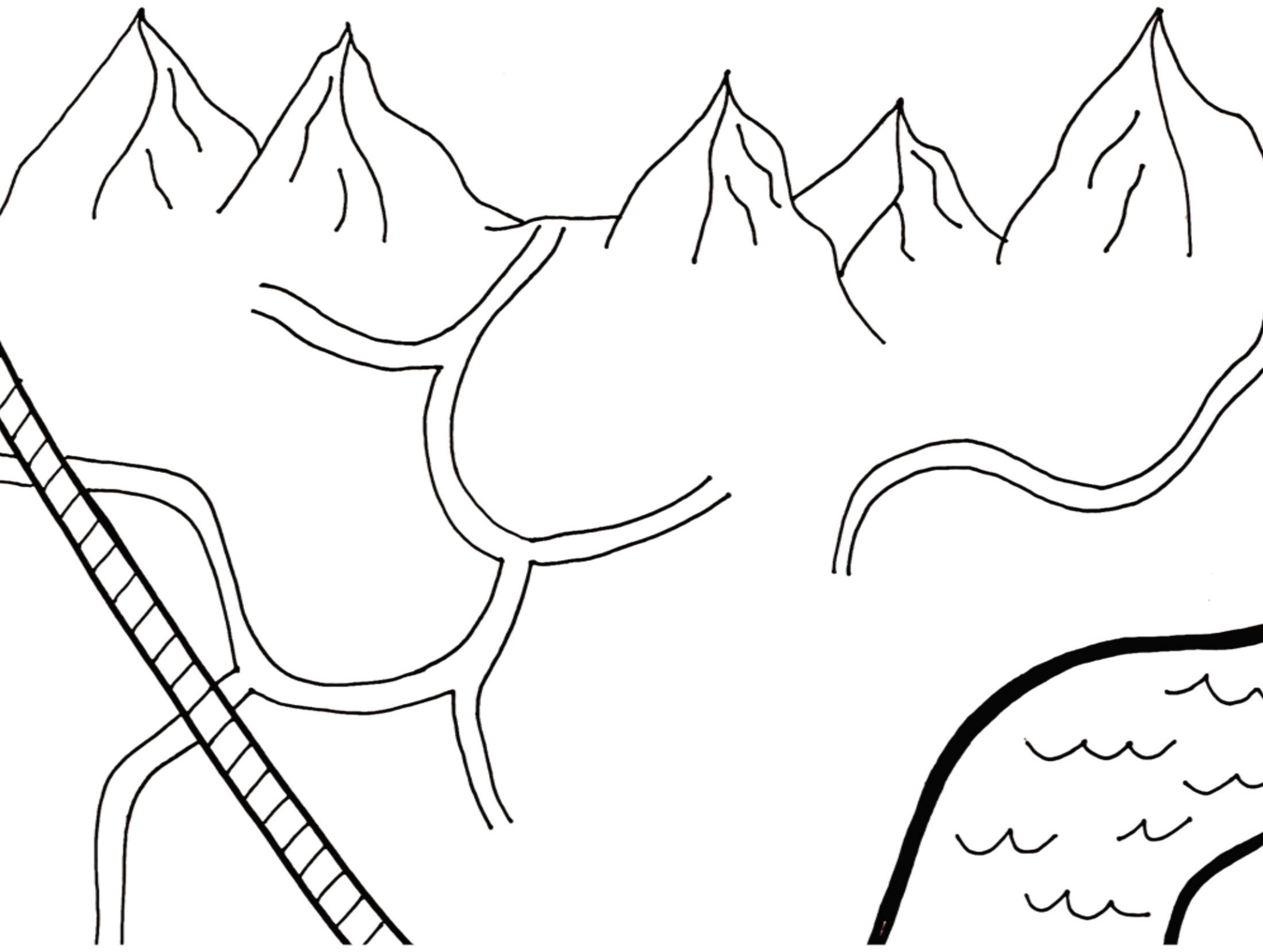
Rural Map Buildings and Nature Elements



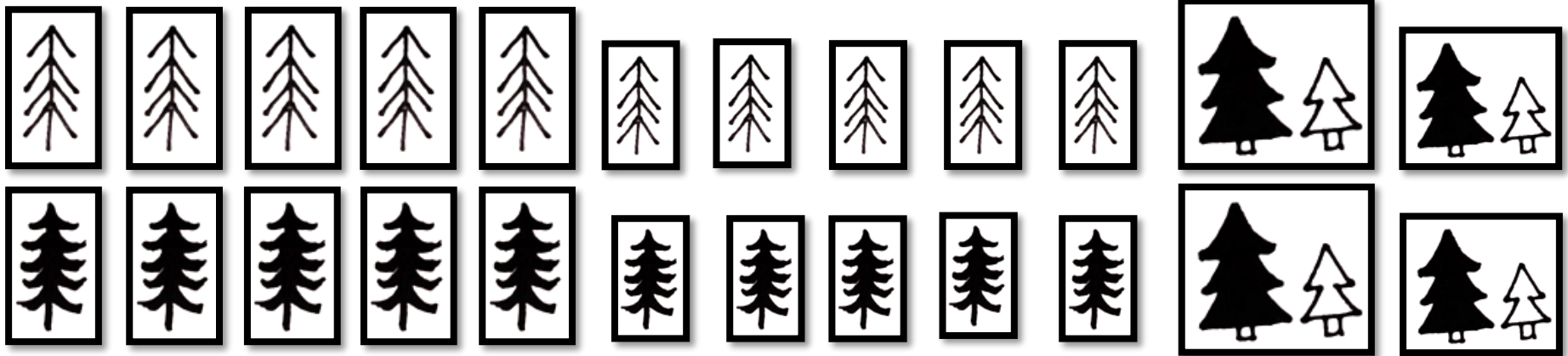
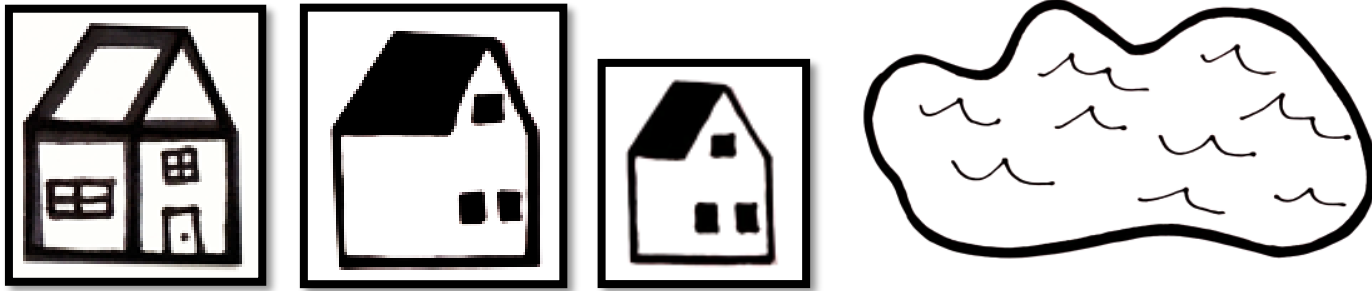
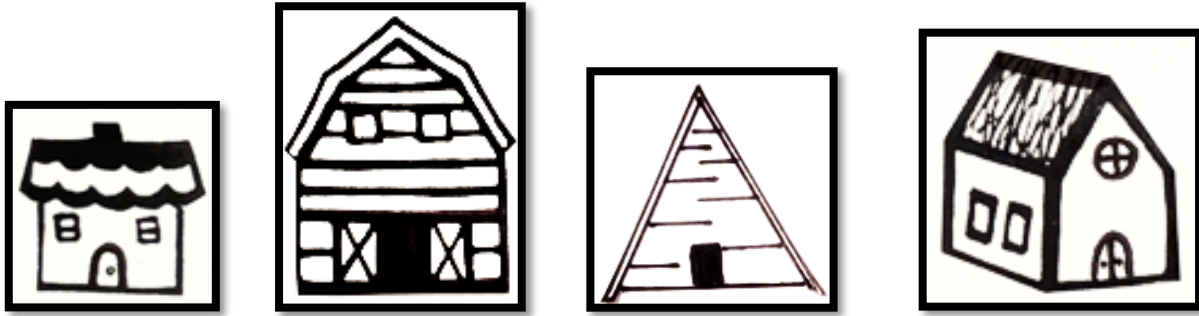
Neighbourhood Mapping Activity

1. Draw houses, buildings and structures OR cut out the ones below to add to your map
2. Draw nature elements OR cut out the trees below and add them to your map
3. You can create a story about your neighbourhood on the back of this sheet
4. You can also use a small tactile object to move around your map as you explore the neighbourhood you have created



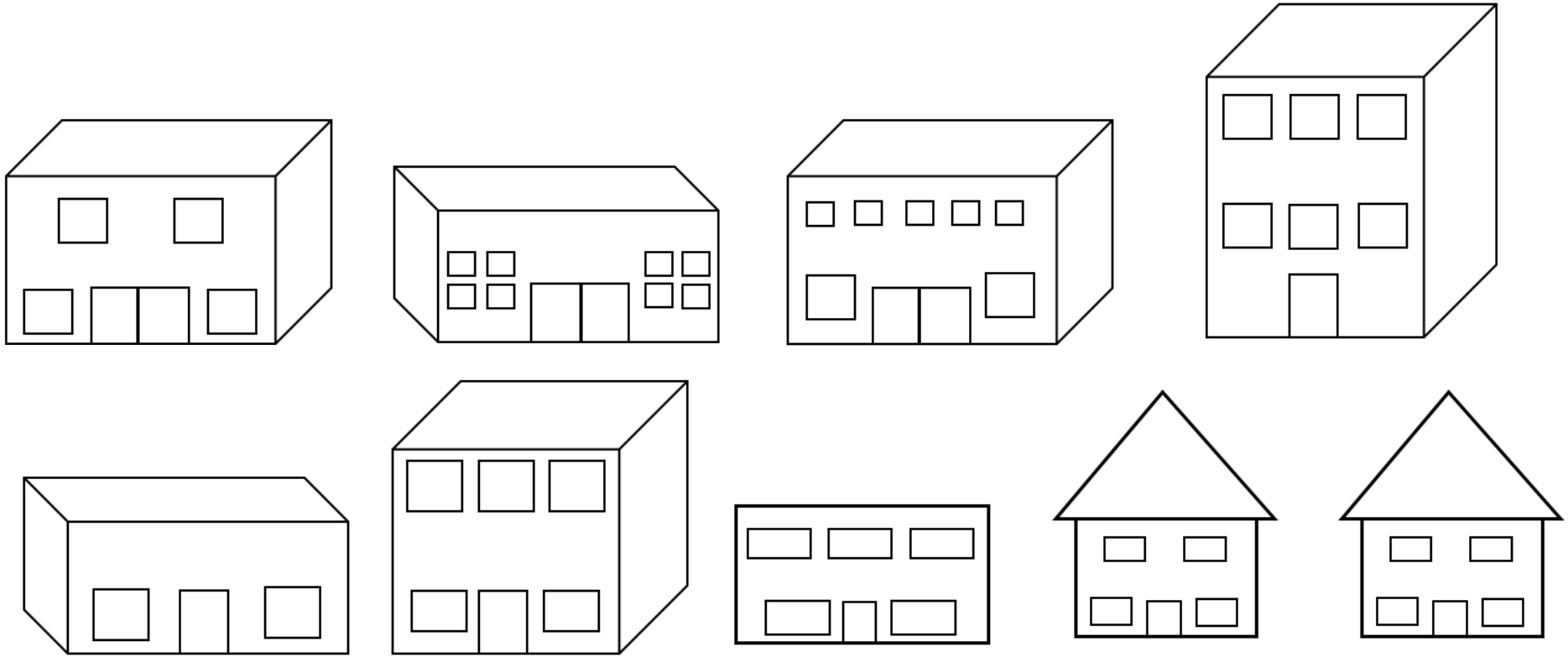


Rural Map Buildings and Nature Elements

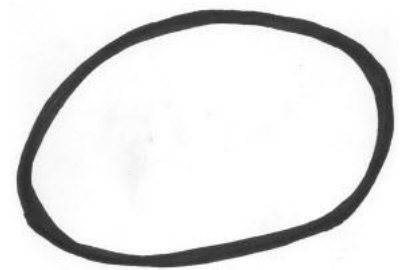
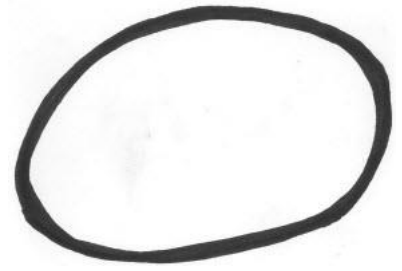
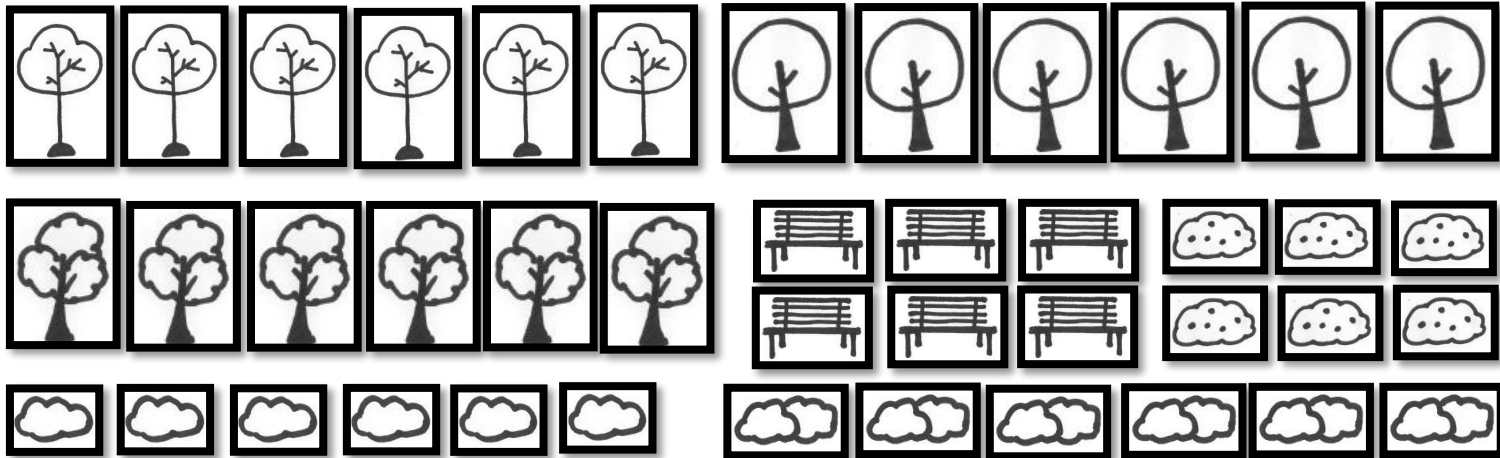


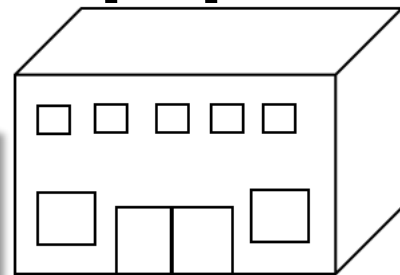
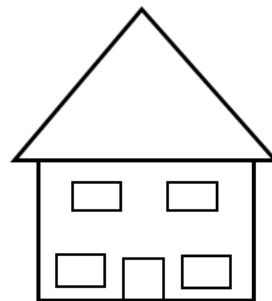
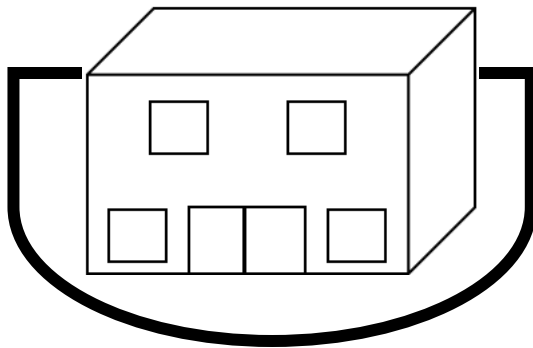
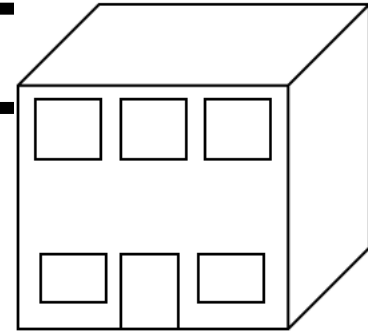
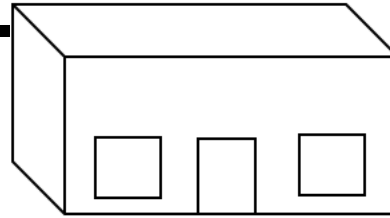
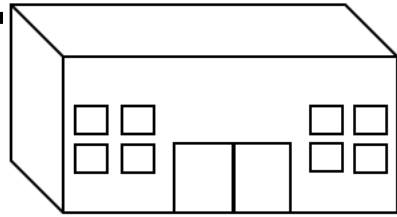
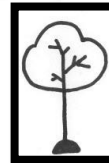
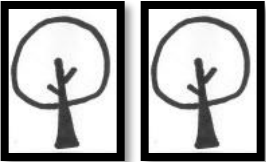
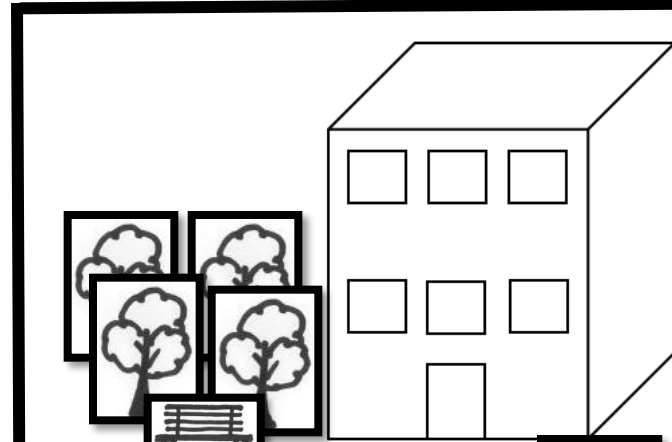
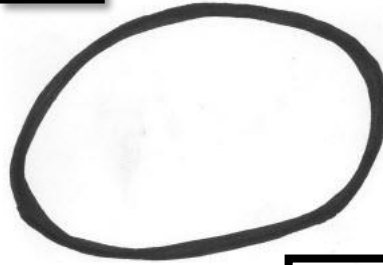
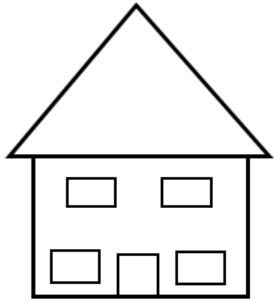
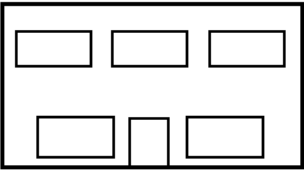


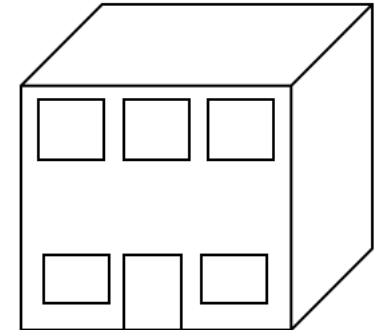
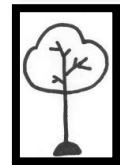
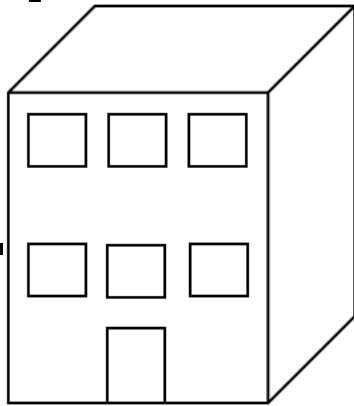
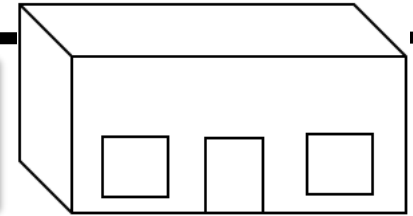
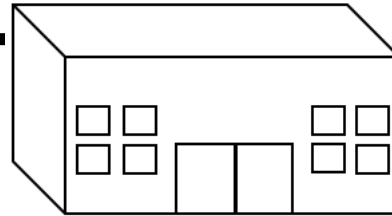
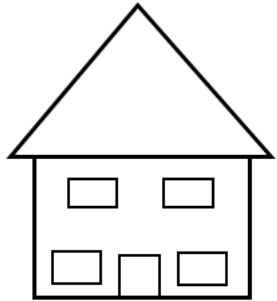
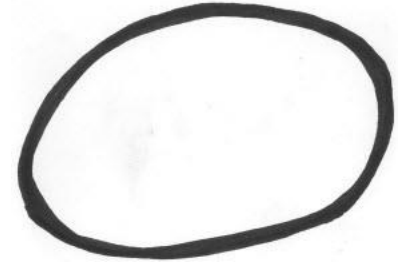
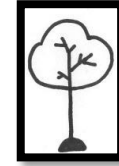
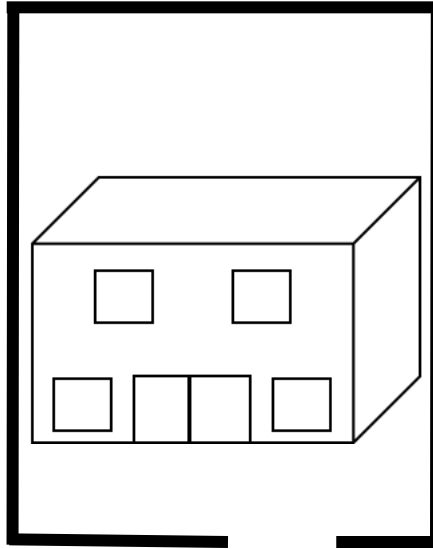
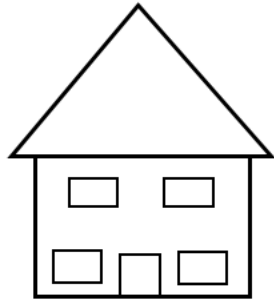
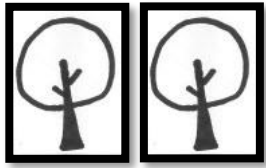
Buildings & Houses

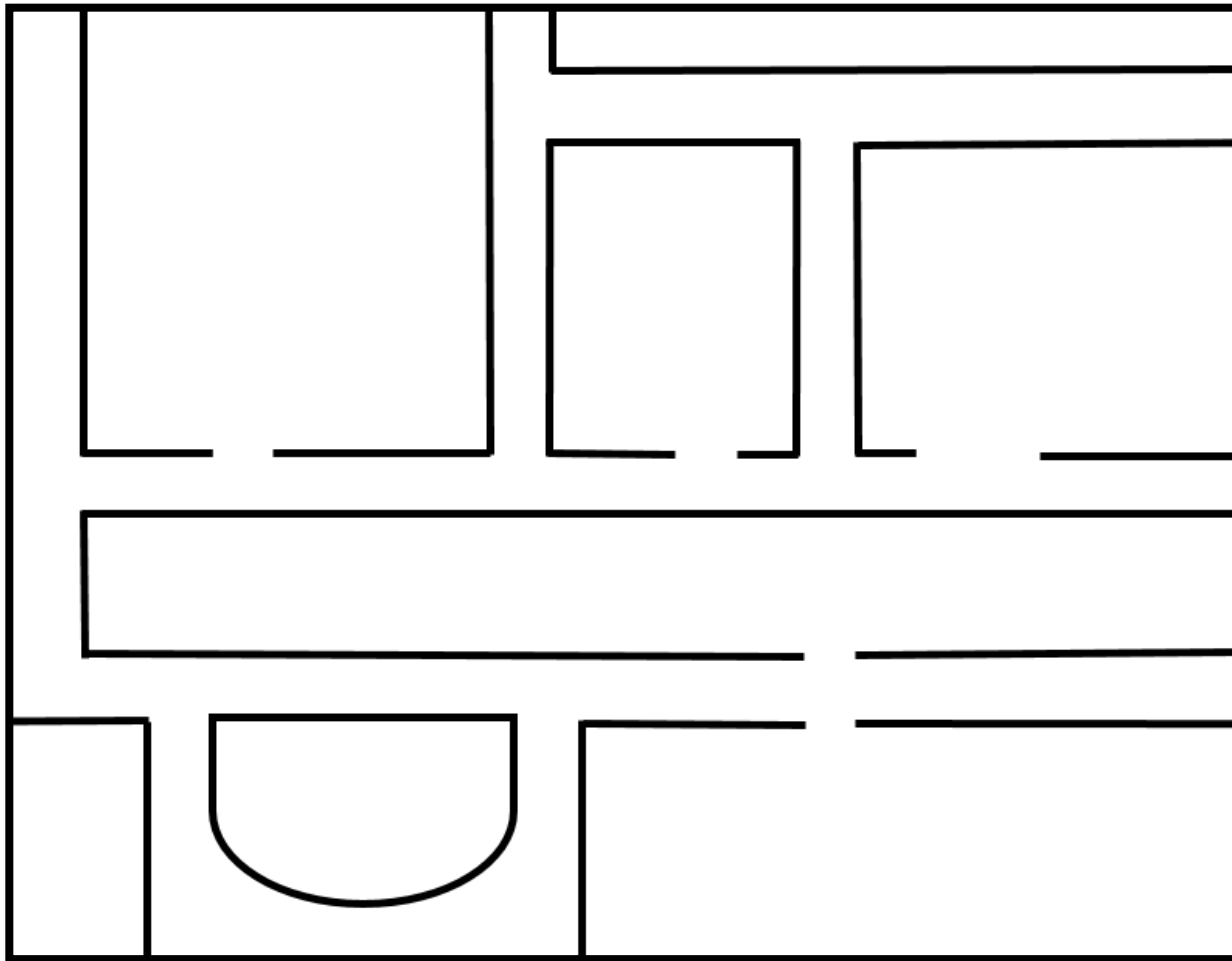


Nature Elements & Benches



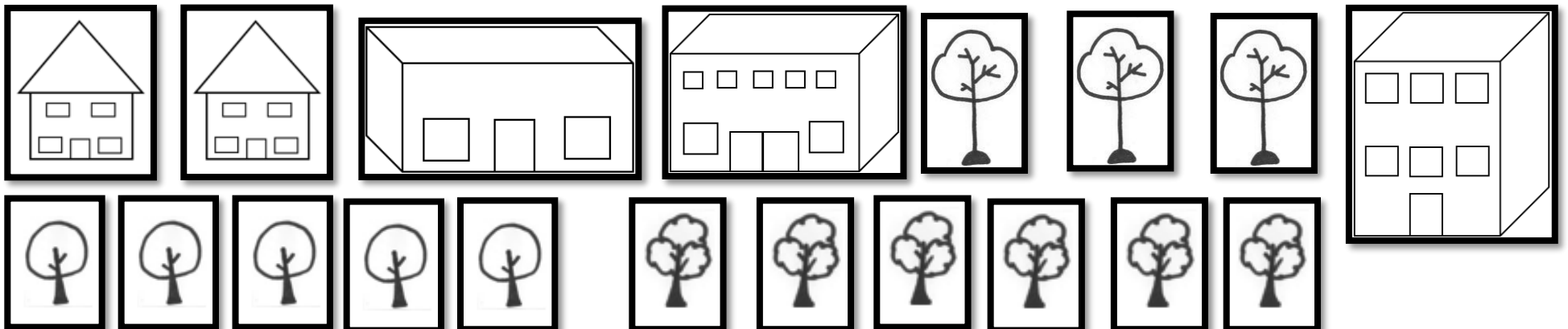


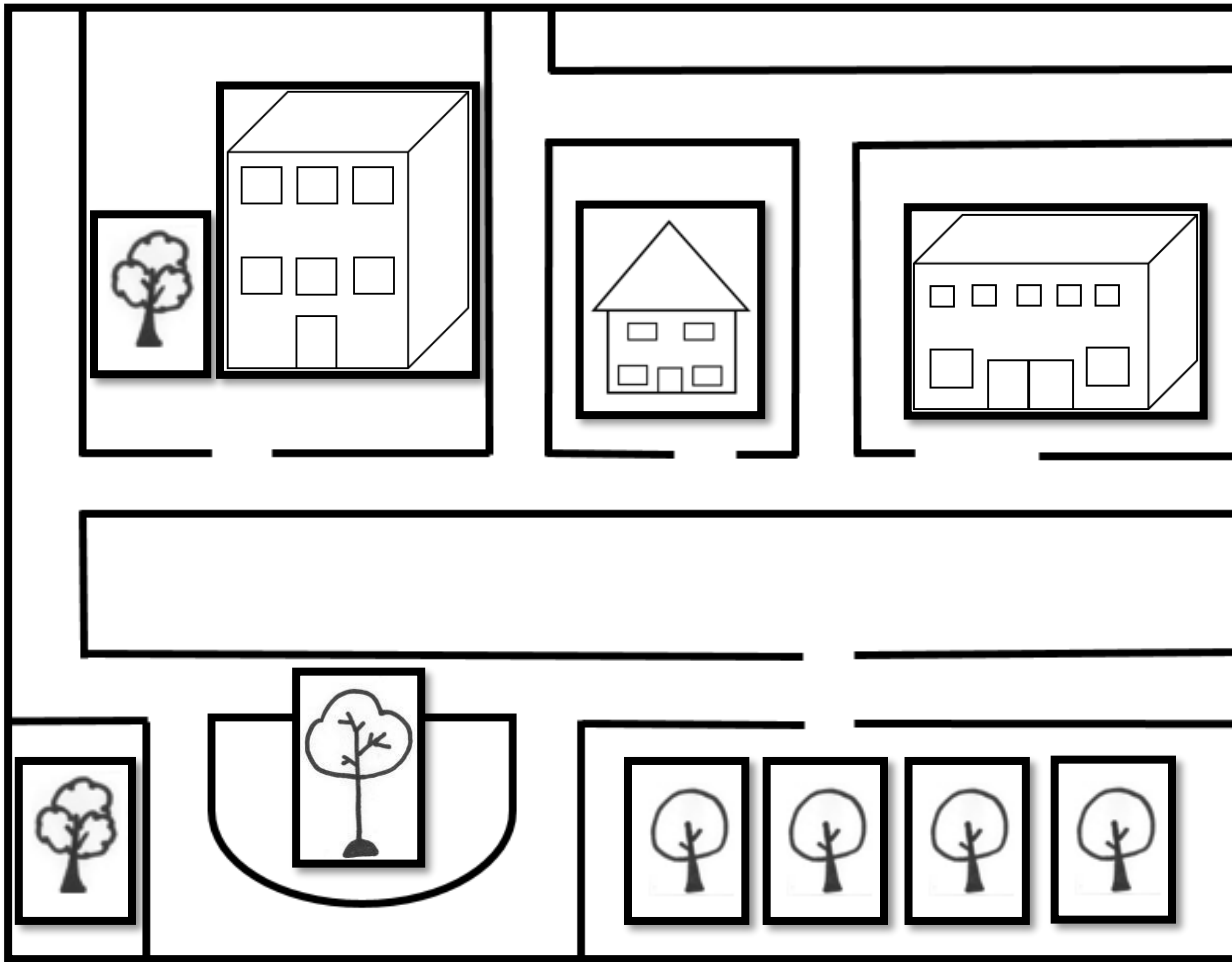




Neighbourhood Mapping Activity

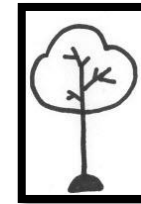
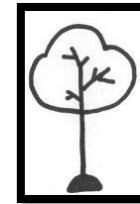
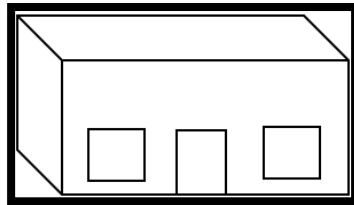
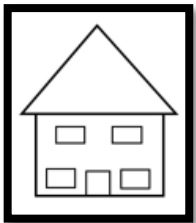
1. Draw houses, buildings and structures OR cut out the ones below to add to your map
2. Draw nature elements OR cut out the trees below and add them to your map
3. You can create a story about your neighbourhood on the back of this sheet
4. You can also use a small tactile object to move around your map as you explore the neighbourhood you have created

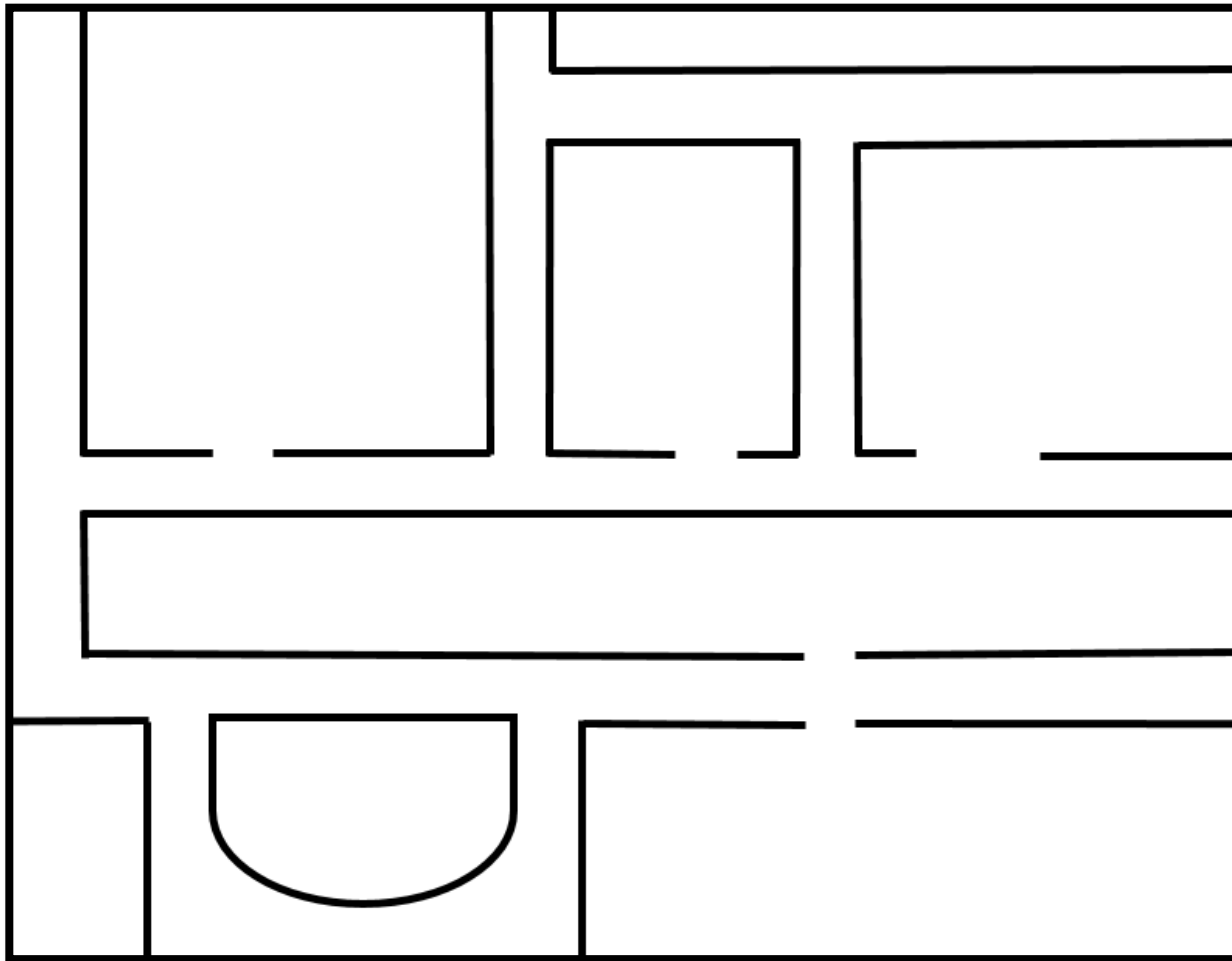




Neighbourhood Mapping Activity

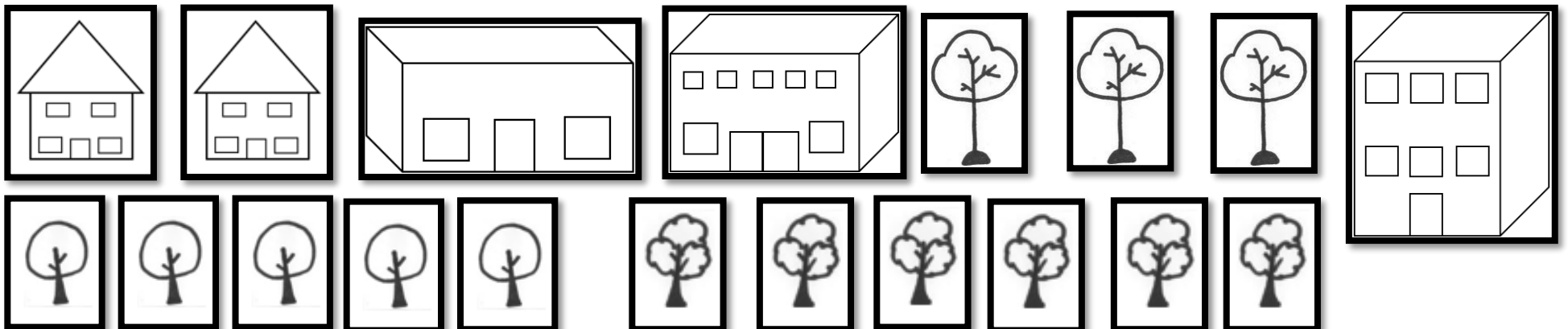
1. Draw houses, buildings and structures OR cut out the ones below to add to your map
2. Draw nature elements OR cut out the trees below and add them to your map
3. You can create a story about your neighbourhood on the back of this sheet
4. You can also use a small tactile object to move around your map as you explore the neighbourhood you have created

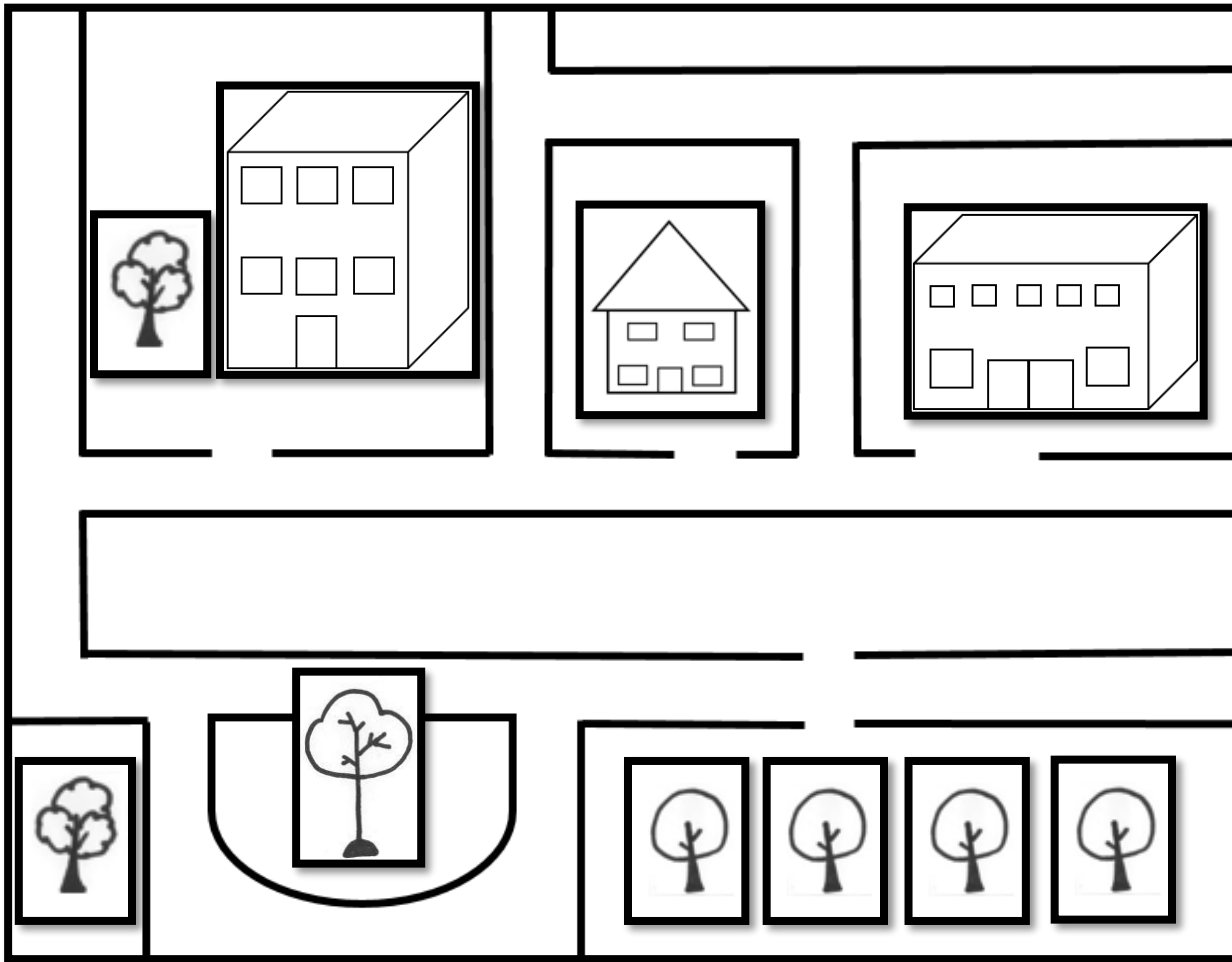




Neighbourhood Mapping Activity

1. Draw houses, buildings and structures OR cut out the ones below to add to your map
2. Draw nature elements OR cut out the trees below and add them to your map
3. You can create a story about your neighbourhood on the back of this sheet
4. You can also use a small tactile object to move around your map as you explore the neighbourhood you have created





Neighbourhood Mapping Activity

1. Draw houses, buildings and structures OR cut out the ones below to add to your map
2. Draw nature elements OR cut out the trees below and add them to your map
3. You can create a story about your neighbourhood on the back of this sheet
4. You can also use a small tactile object to move around your map as you explore the neighbourhood you have created

